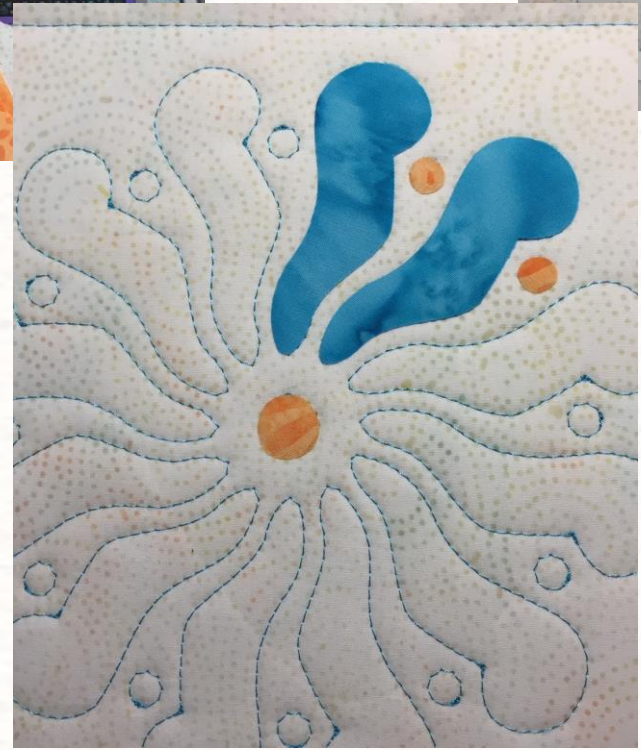


Basics and Beyond:
Scan N Cut
for Applique Shapes
embroidery machine designs by:
Anna's Awesome Appliqué Designs

Scan N Cut Overview

- Applique Shapes are cut before stitching out block
- No trimming of Applique Fabric as part of Tack Down Stitches
- Reduces Fabric Frays
- File formats with Anna's Designs
FCM, SVG, JPG, PDF
- My files have already been adjusted to be a bit larger than Placement Stitches
- Different ScanNCut Models interactions



Cut Files – what is that all about?

What is included in the Design.

1. Block Instructions with sizes for each Applique Shape.
2. Cut File chart Sizes for each Applique Shape.
3. PDF of how Applique Shapes will appear on Scan n Cut Screen.
4. Applique Fabric on Mat

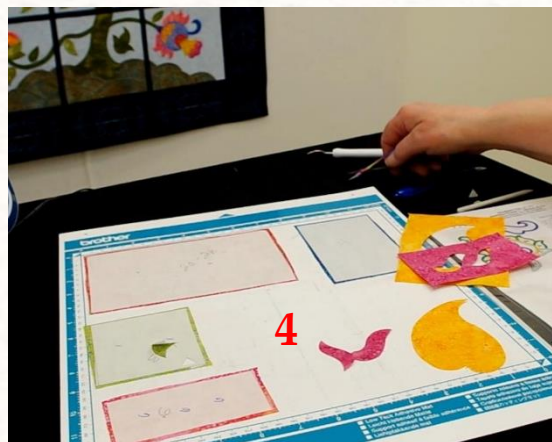
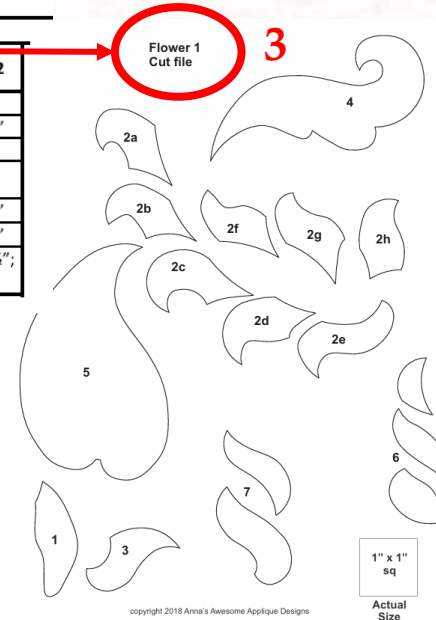


Jacobean Tree of Life
Applique Flower 1 – Bonus Block
 Applique Design by Pat Campbell – Digitized Design by Anna Aldron

Fabric Requirements	
Size of Applique Fabric	Applique Shape #
6 1/2" x 7 1/2"	Embroidery Batting
10 1/2" x 10 1/2"	Background Fabric
1 1/2" x 2 1/2"	1
5" x 6" – one fabric	2a – 2h
OR	
(8) 1 1/2" x 2 1/2" – Multiple fabrics	3
3 1/2" x 4 1/2"	4
3 1/2" x 3 1/2"	5
3" x 3 1/2"	6
2 1/2" x 3 1/2"	7

Step #'s and Stitch Type	Applique Shape #'s	General Instructions
1 - Basting Stitch		To secure background fabric to embroidery batting stabilizer.
2 - Placement; 3 - Tack Down	Flower	Placement Stitches (P) for Fleece. After Tack Down (TD) remove hoop from embroidery unit and TRIM the Fleece using the Tack Down stitch as a guide.
4 - Placement 5 - Tack Down 6 - Trapunto Stitch 7 - Cover Stitch	1	TRIM applique fabric after Tack Down Stitch. Use same thread color for Placement, Tack Down and Cover Stitches. As desired, change thread for Trapunto Stitches
8 - Placement 9 - 10 - Tack Down 11 - Trapunto Stitch 12 - Cover Stitch	2a - 2h	TRIM applique fabric after Tack Down Stitch. Use same thread color for Placement, Tack Down and Cover Stitches. As desired, change thread for Trapunto Stitches
<i>NOTE: Each applique shape can be done using one piece of fabric or more than one fabric for each shape. If using one fabric – place the fabric on top of all the Placement stitches and stitch out all Tack Down stitches before trimming. If using more than one fabric, Tack down and trim each fabric as needed.</i>		
13 - Placement 14 - Tack Down 15 - Trapunto Stitch 16 - Cover Stitch	3	TRIM applique fabric after Tack Down Stitch. Use same thread color for Placement, Tack Down and Cover Stitches. As desired, change thread for Trapunto Stitches

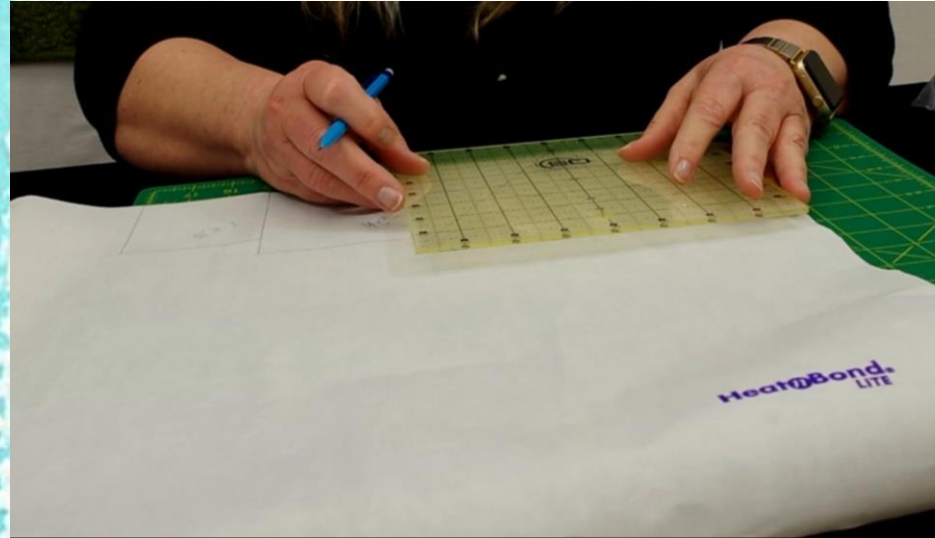
Bonus Blocks - sizes for possible					
Applique Shape #	Bird	Applique Shape #	Flower 1	Applique Shape #	Flower 2
1	1" x 1 1/2"	1 & 3	3" x 3 1/2"	1	2" x 3"
2	2 1/2" x 2 1/2"	2a - 2h	4 1/2" x 7"	2	2 1/2" x 3"
3	3 1/2" x 5 1/2"	4	3" x 5"	3	2" x 3"
4	2 1/2" x 2 1/2"	5	3 1/2" x 5 1/2"	4	2" x 3"
5	2 1/2" x 2 1/2"	6	2" x 4"	5	2 1/2" x 3"
6	2 1/2" x 2 1/2"	7	2 1/2" x 4"	6	2" x 2 1/2"
				7 & 7a	2 1/2" x 3 1/2"; 3" x 3"



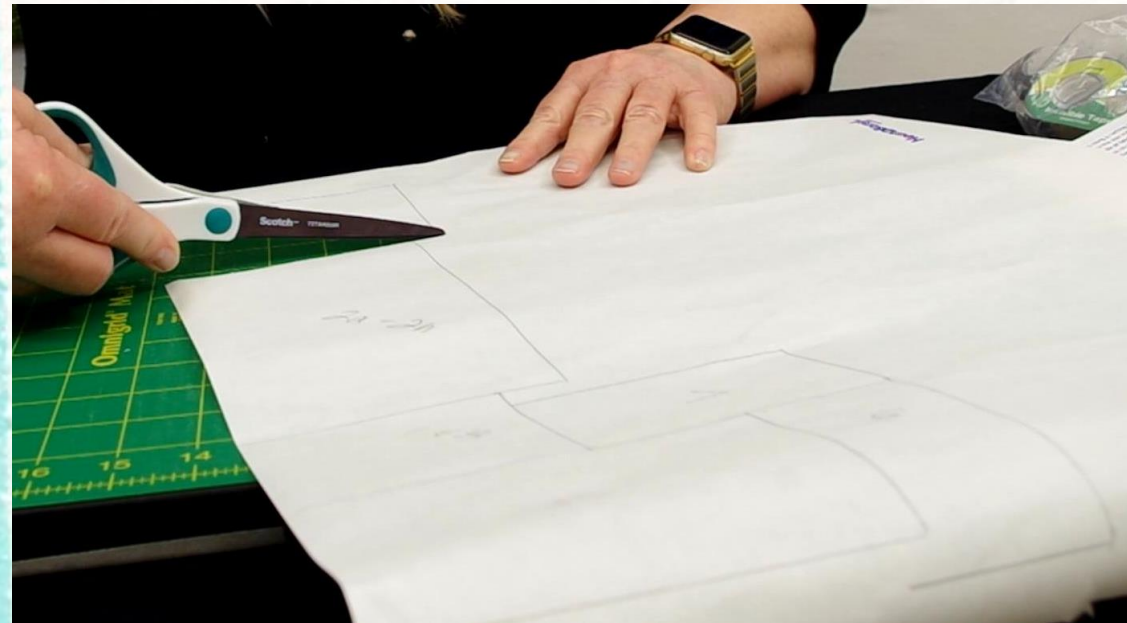
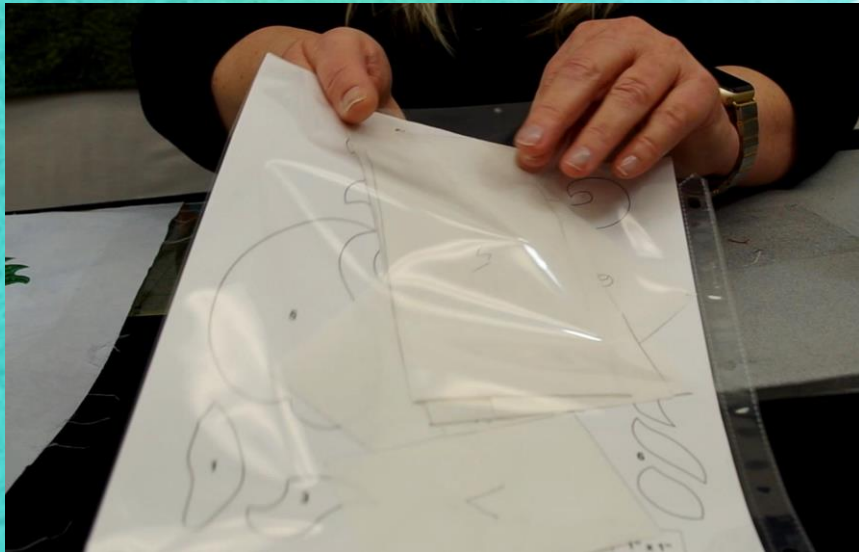
Jacobean Tree of Life

Scan N Cut Preparation

1. Drawing on the **Heat n Bond Light**
 - Use Sizes in Cutting Chart
 - Include the Block # and Applique Shape #
 - Cut with Paper Scissors



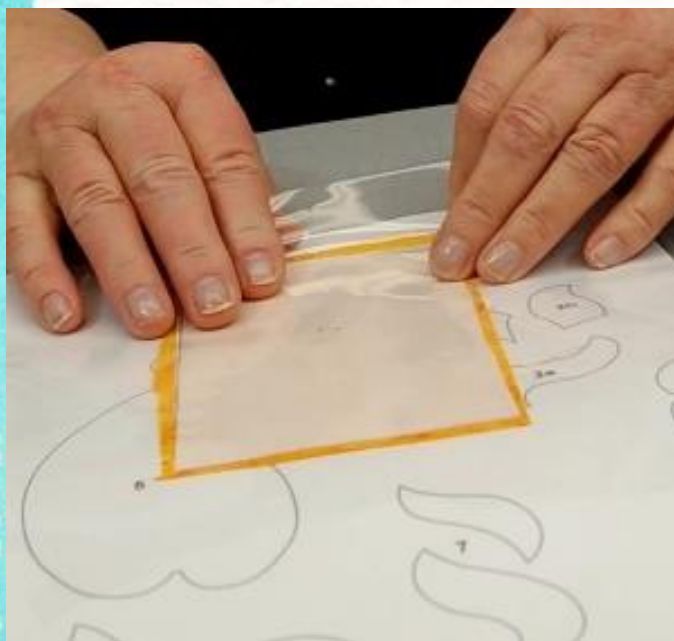
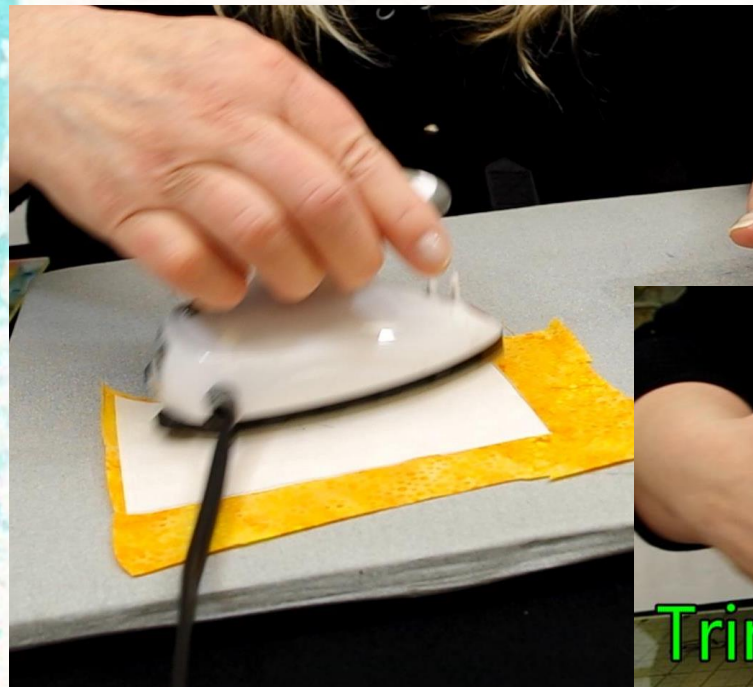
Applique Shape #	Block 1	Applique Shape #	Block
1	2" x 5"	1	2" x 3 1
2	2" x 2 1/2"	2	2" x 5
3	2" x 3"	3	3" x 3 1
4 & 6	3" x 3 1/2"	4	2" x 3
5a -5h	4 1/2" x 7"	5	2" x 2 1
7	3" x 5"	6	2" x 3
8	3 1/2" x 5 1/2"	7	2 1/2" x
9	2" x 4"	8	2" x 3
10	2 1/2" x 4"	9	2" x 3
		10	2 1/2" x



Scan N Cut Preparation

1. Press cut Heat n Bond Lite to backside of Applique Fabric
 - Trim Applique Fabric about 1/8" – 1/4 around Heat n Bond
2. Store in Protector Sheet

NOTE: Press fabric with Mary Ellen Best Press first.



ScanNCut Sequence

1. Load design.

2. Move Shapes

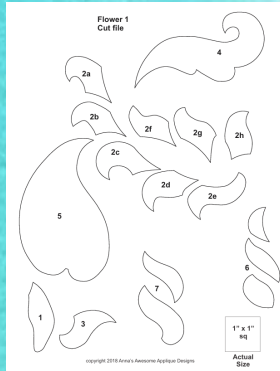
3. Mirror Image Shapes.

4. Put Applique Fabric on Mat, based on location of shapes on screen.

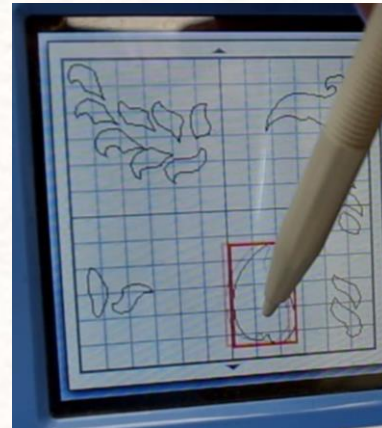
- Fabric side down, Paper side up
- Refer to PDF with shapes and numbers

5. Load and Scan Mat.

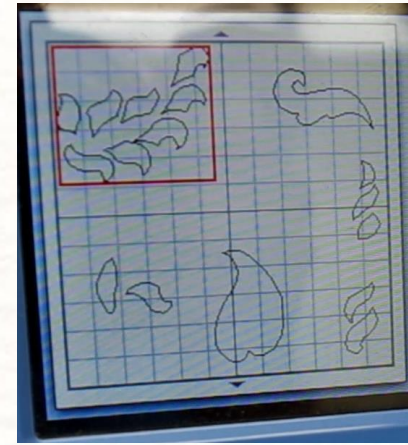
6. Move Applique objects on top of fabric images within the screen.



1

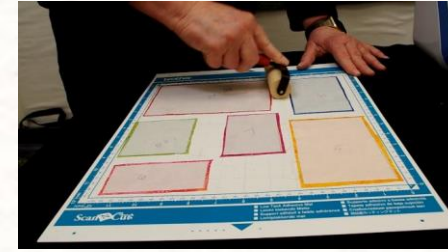


2



3

Mirror Image



4



5

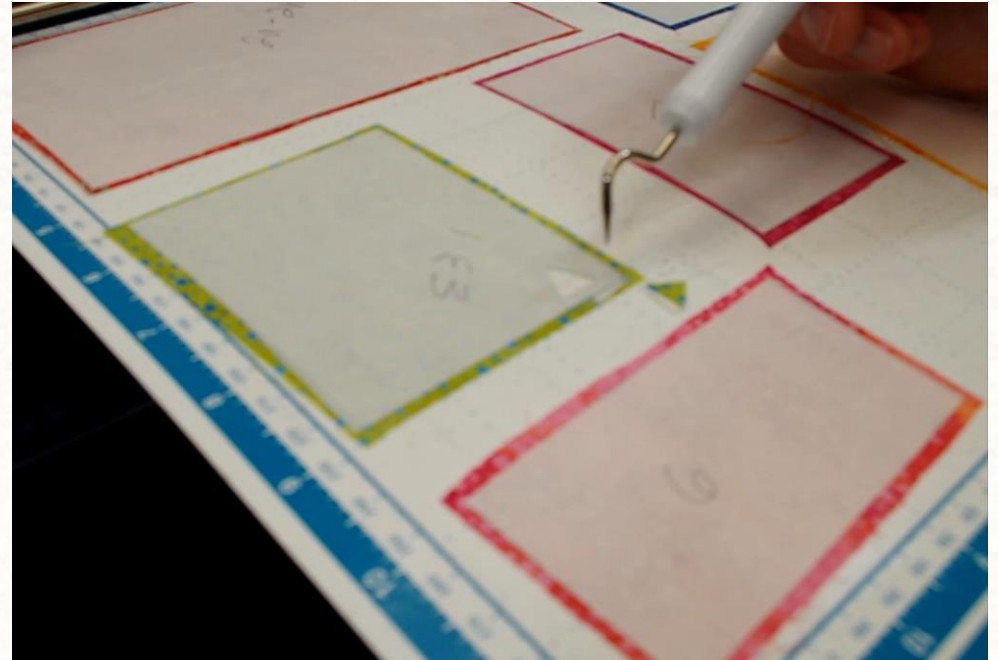


6

ScanNCut Sequence

1. Test Cut.
 - To confirm the cut is at the appropriate depth – cutting through fabric.
 - If good, continue to cut all Applique Shapes.
2. Cut Shapes.
 - Write Applique numbers on Paper side within the cut shape.
3. Place cut shapes in baggie or Protector Sheet.

1



2



Designs that include Cut Files

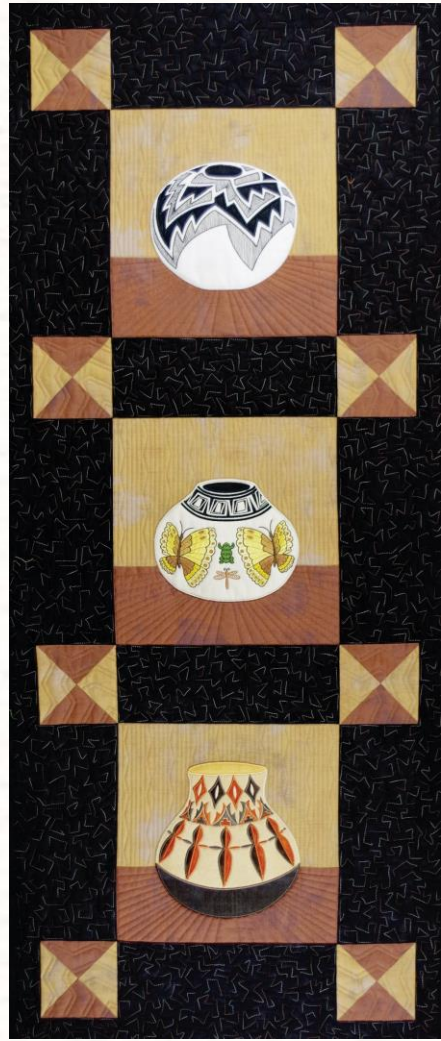


Monthly Wall Hanging

Designs that include Cut Files



Bountiful Blessings
1, 2, 3, 4



Designs that include Cut Files



Advent Santa



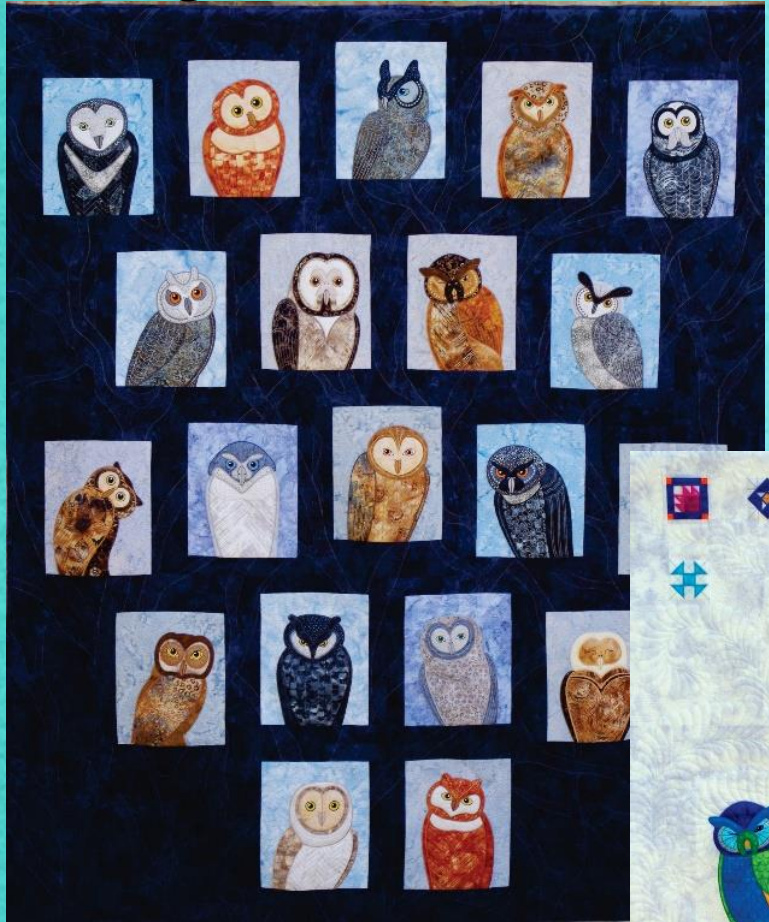
All About Santa

Designs that include Cut Files

Santa Owls



Designs that include Cut Files

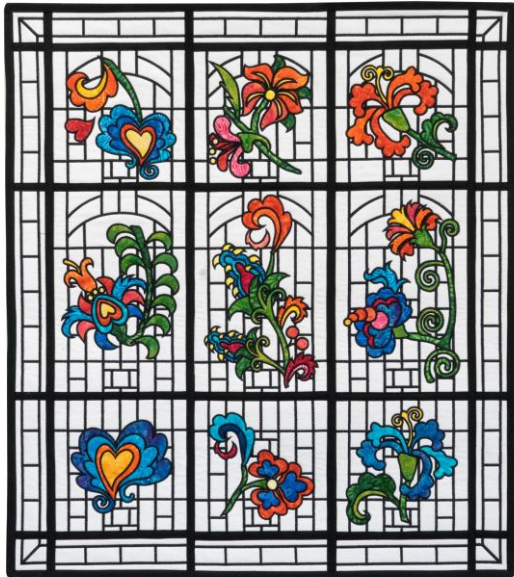


Owls With Attitude

Designs that include Cut Files



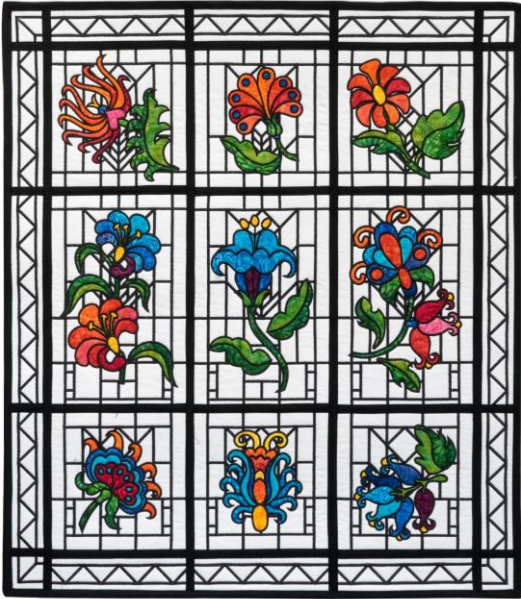
Jacobean Tree of Life



Exotic Flowers 1



Exotic Flowers 2



Exotic Flowers 3



Designs that include Cut Files

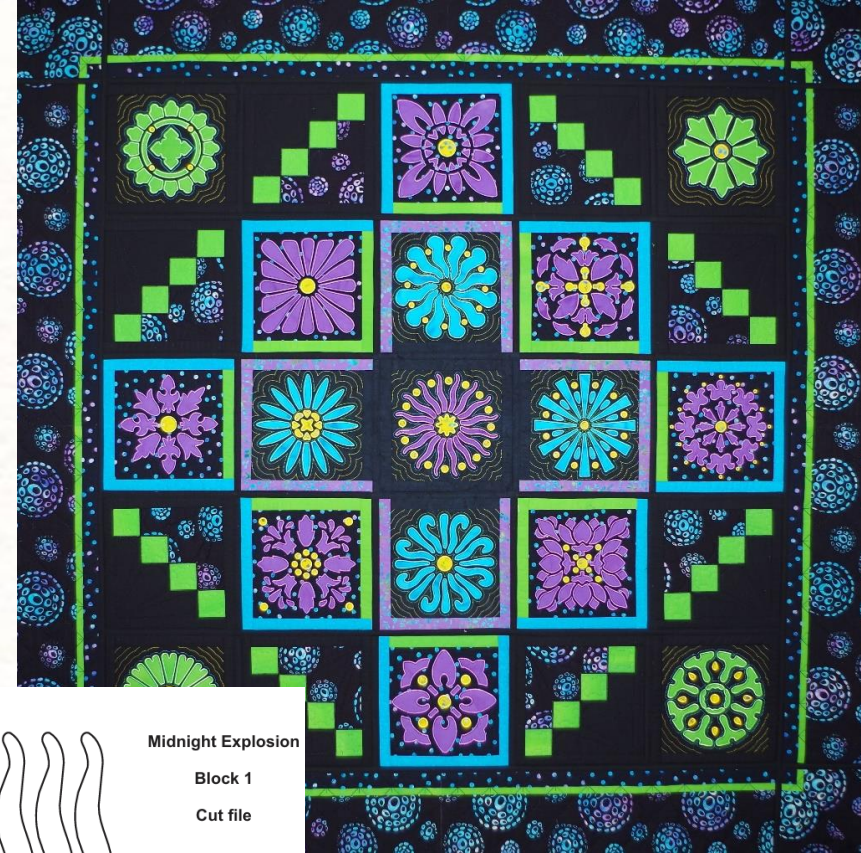


Flamingo Flirtation



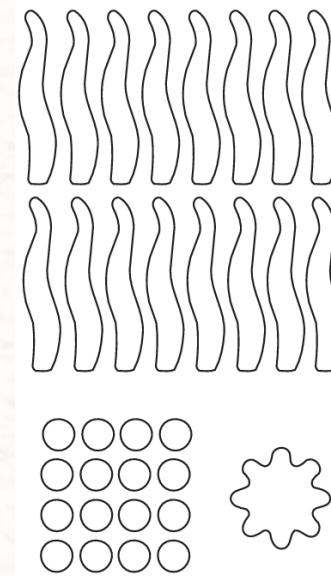
Colorful Koi

Cut File examples



Victoria Flower Garden

1, 2, 3



Midnight Explosion

Block 1

Cut file

Midnight Explosion

1" x 1" sq
Actual Size



Scan N Cut



1. Insert USB stick with cut files loaded

2. On screen – touch "Retrieve Data"

3. Select the USB Stick Option

4. Locate the cut file folder.



5. Locate and select the Cut file from window.

Scan N Cut



6. View name of Cut File and Click on **OK**.



7. Click on the **Edit** button.



8. Click on the **Object Edit** button.



9. Edit Option window appears

Scan N Cut



10. With object selected, touch the mirror image icon.

Note: the icon changes to a solid blue background which indicates that object is mirrored.



11. Continue to mirror each cut file images.
12. Touch "OK" after all images have been mirrored.

Loading Mat

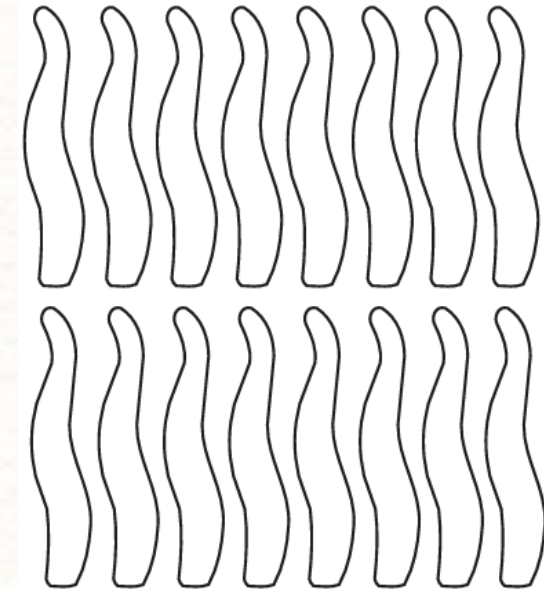


13. Place Applique Fabric Face Down on Mat corresponding to PDF layout.

Secure Applique Fabric by using a Brayer/roller over each Applique Fabric

NOTE: May need to remove some objects if there is not enough room on the mat for all the Applique Fabric.

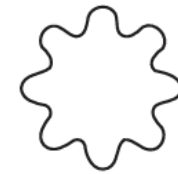
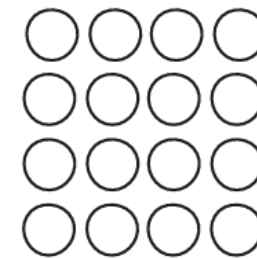
They will be cut after the first group.



Midnight Explosion

Block 1

Cut file



1" x 1"
sq

Actual
Size

copyright 2019 Anna's Awesome Applique Designs

Loading and Scanning Mat

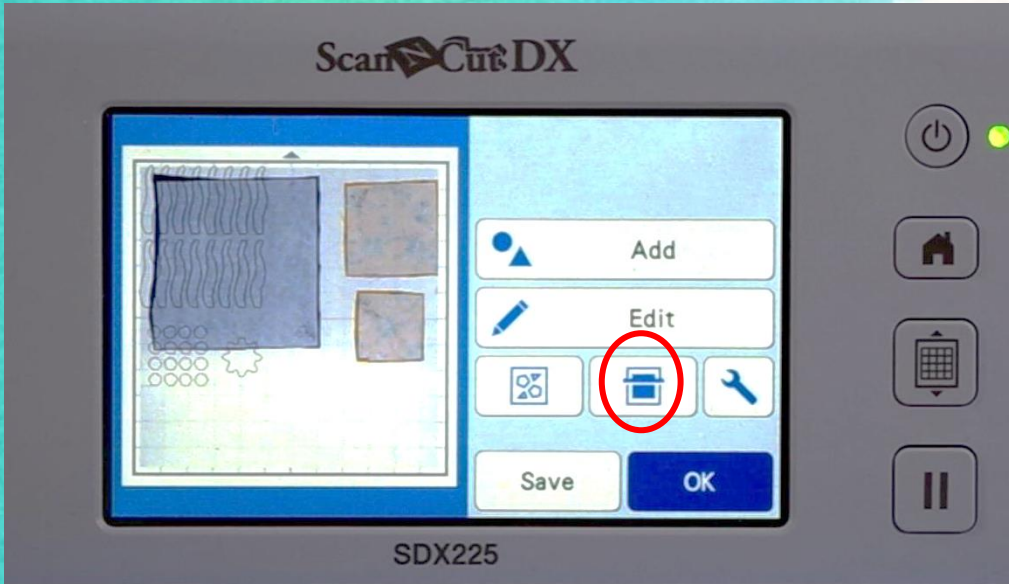


14. Support the mat within the edges of the roller.
Then press the Load Mat button.



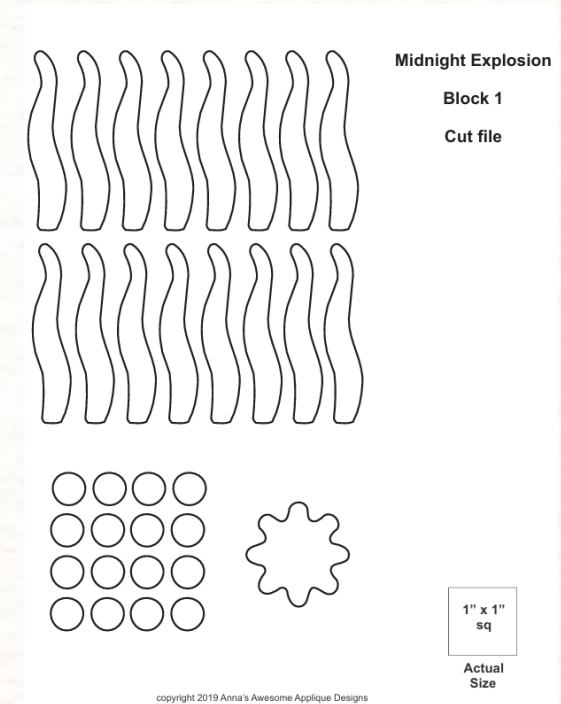
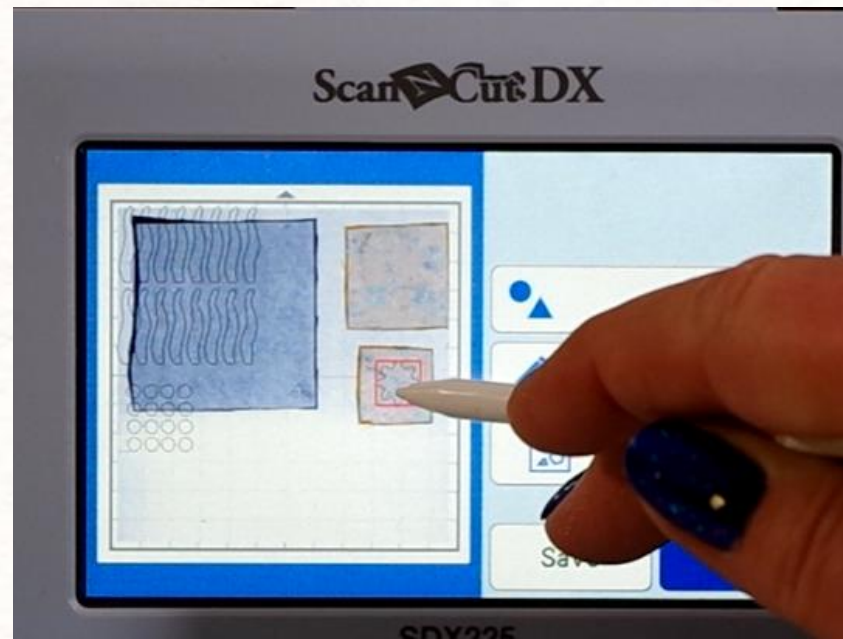
15. Once the Mat is Loaded, Select the Start button.

Moving Objects



16. Click on the Icon to scan the mat.

Move Objects to be centered on top of Applique Fabric.



Scan N Cut Test Cut



17. Touch the "Please select".



18. Touch the "Cut" option.



19. Touch the "Test".



20. Select the middle icon



21. Select the "triangle" icon. Then touch "OK".

Scan N Cut

23. Move the **Test Triangle** to be on top of fabric - **NOT** on within the objects to be cut.



24. Touch the **"Start"**.

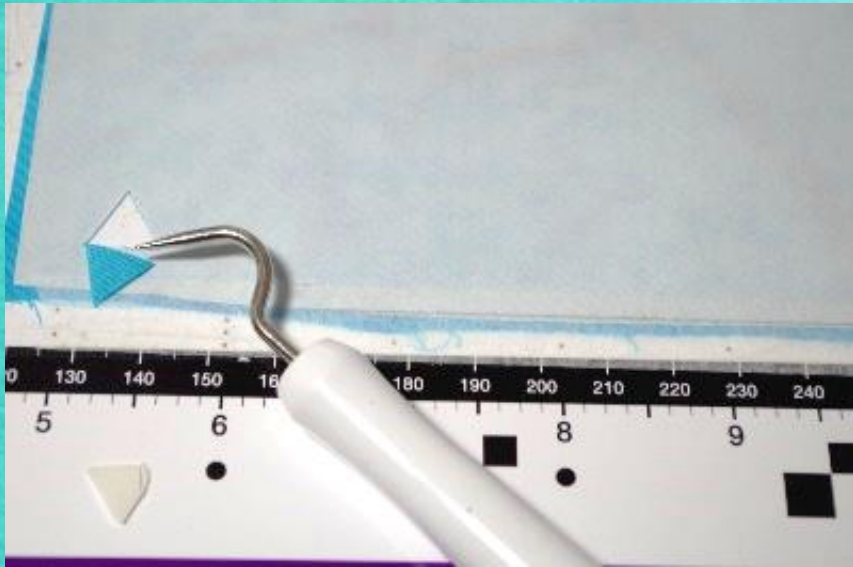
22. The **Test Triangle** appears on the screen.



25. The ScanNCut will cut the **Test Triangle**.



Scan N Cut - Cutting



26. Use tool to remove the Test Cut Fabric.

Confirm the cut is clean.



27. If Test cut is good, then select **“Start”**.



28. Touch **OK** after cutting is completed.

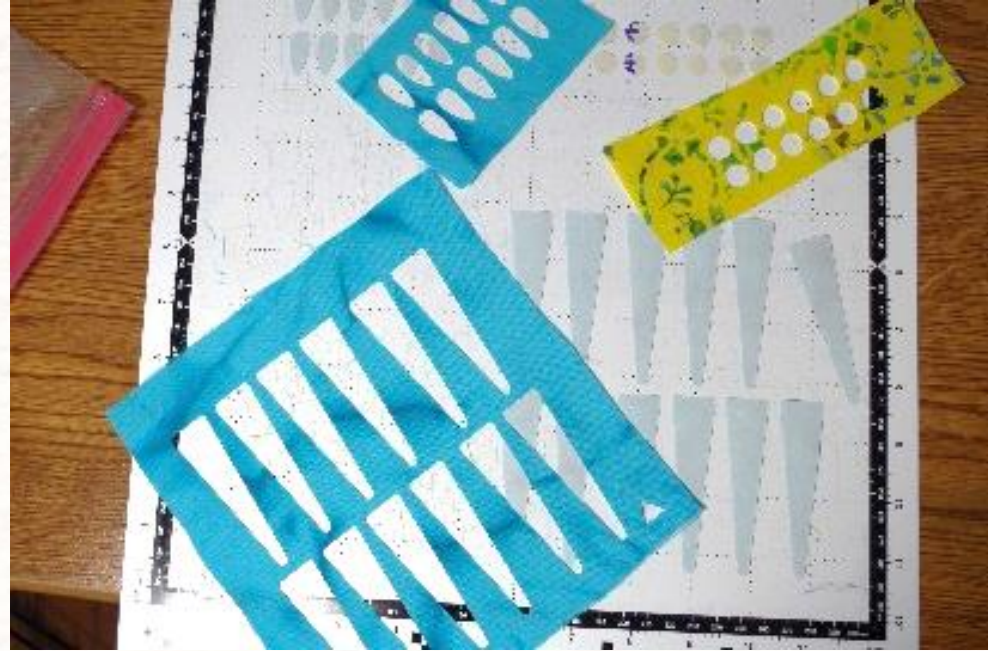
Scan N Cut



29. Press the Load/Unload button to Unload the mat.



30. Remove the cut shapes from the Mat

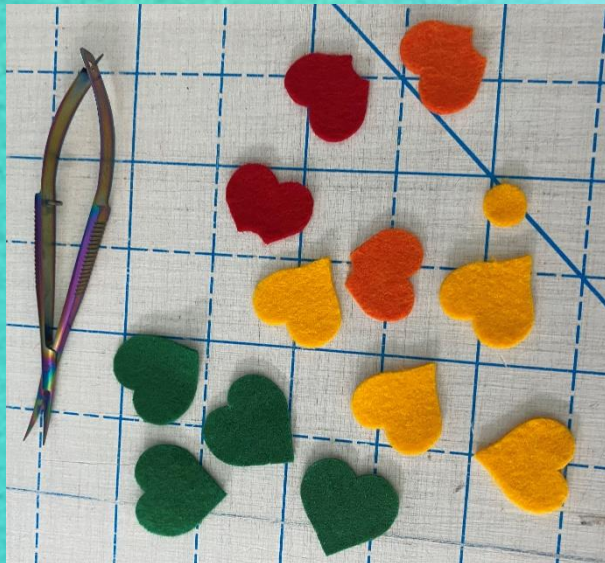


31. Store cut shapes in a baggie or protector sheet with Block Instructions



Cutting Wool on Scan N Cut

Possible Online Class?



Outside the Block

Q & A

Initial ScanNCut Video –
Older model of ScanNCut

Newly posted ScanNCut
Video features SDX225 model



Scan N Cut for Applique

by Anna Aldmon | Aug 5, 2018 | Technique | 0 Comments

Anna has developed a process to prepare Applique Fabric for Scan N Cut, and she is ready to share a video of exactly how it's done! This video goes into wonderful detail about how to prepare and manage the Applique Fabric prior to



ScanNCut for Applique 2

by AnnasAADAdmin | Oct 22, 2024 | Technique | 0 Comments

Anna has created a new video for cutting Applique Shapes for the "Midnight Explosion" design for Embroidery Machines using the Scan N Cut SDX225. Similar to the first Scan N Cut video, it has step by step how to cut the Applique Fabric to create the...



Tools –

- Pick Tool
- Stylist
- Roller/Brayer



Free Kitty design via Free Member Area

Website:

<https://annasawesomeappliquedesigns.com/>

- Click on the “Become a FREE Member Today!” orange button – upper right corner.
- FREE Member becomes a Cart item.
- Complete Login Information.
- Login to Free Members Area to get access to Technique Videos and 2 Free designs.

